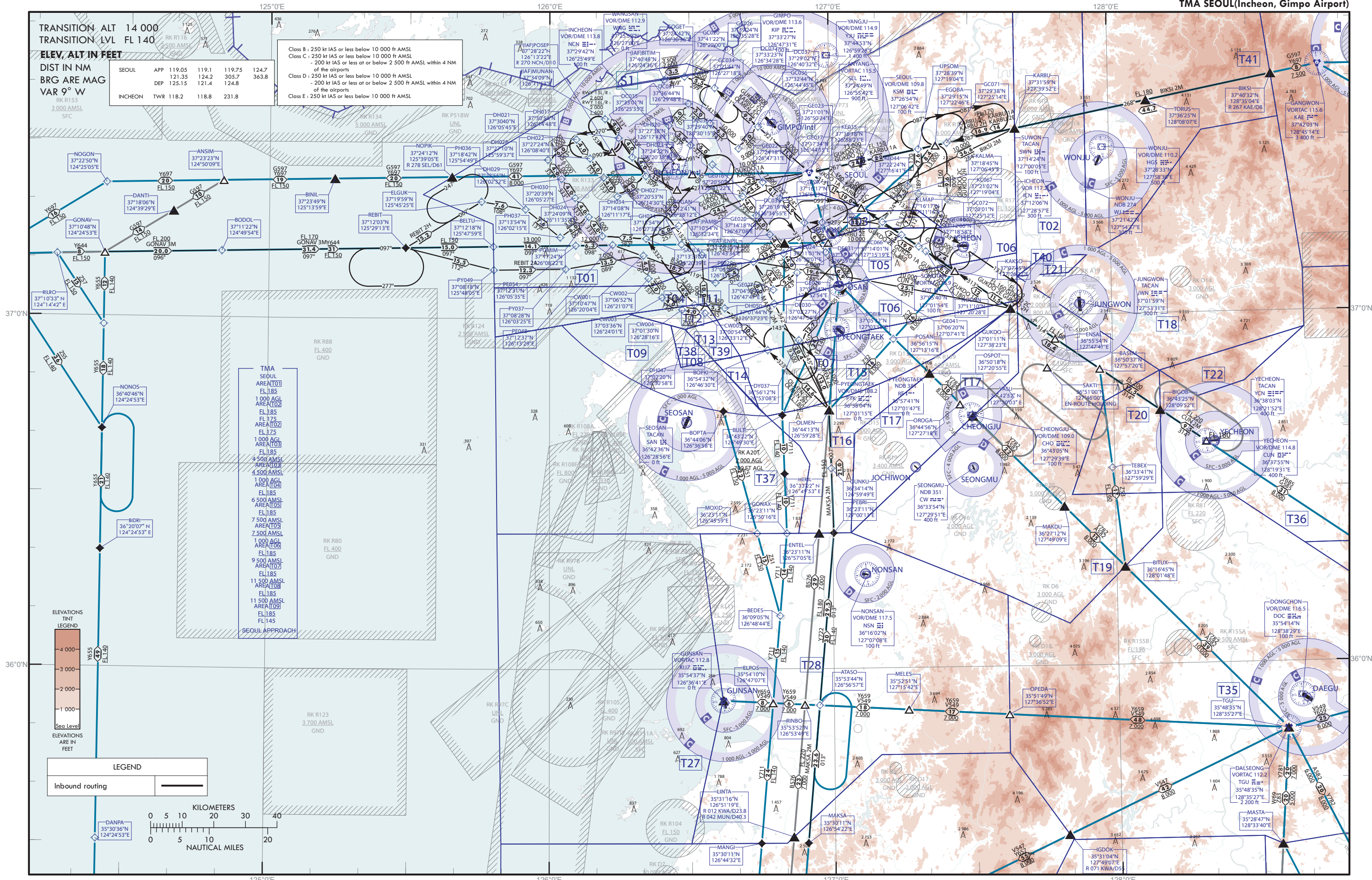


AREA CHART - ICAO (ARRIVAL TRANSIT)

TMA SEOUL(Incheon, Gimpo Airport)



Change : Information of reporting point and Establishment of fix(BIDRI, GUNKU, MEKIL, ENSAL, VASLI, TORUS).

PUBLISHED BY THE OFFICE OF CIVIL AVIATION, MINISTRY OF LAND, INFRASTRUCTURE AND TRANSPORT. REPUBLIC OF KOREA